

Parent Meeting

March 10, 2018

Presented by INSERT NAME

PINELLAS COUNTY SCHOOLS TALENT IDENTIFICATION PROGRAM

PLANNING FOR COLLEGE

What do you need to know about the college admissions process?



PLANNING FOR COLLEGE STARTS NOW 😊

- ✘ Key points for 8th Grade
 - + Courses taken in 8th grade can determine what programs students are eligible for in the 9th grade
 - + Students who wish to participate in honors and AP course opportunities in the 9th grade should ensure they have advanced core academic courses and/or high school courses in 8th grade
 - + High school courses taken in 8th grade DO count in students' high school grade point averages (GPAs) and in their class rankings



DISTRICT RESOURCES AVAILABLE

- How can parents and students learn about programs available in high school?
 - Pinellas Pathways to Graduation
 - CTE Matrix (Career Technical Education Program)
 - District Application Programs

ACCESS THESE RESOURCES AT:

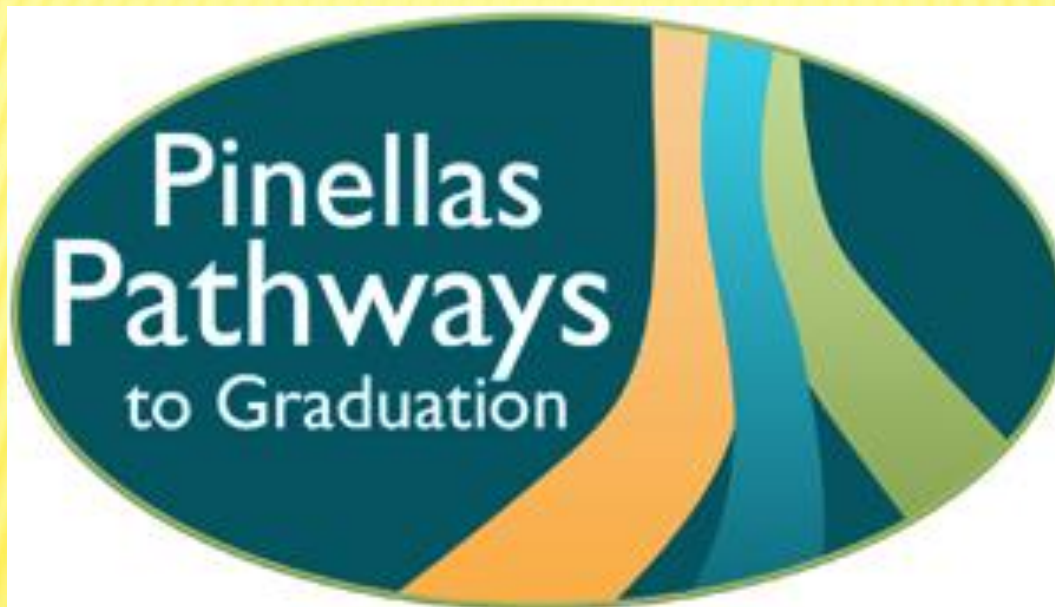
www.pcsb.org

- × Departments tab
- × Teaching and Learning (in departments)
- × Middle School (left navigation bar)



PINELLAS PATHWAYS TO GRADUATION

- ✘ Use the flyer to help you think about high school planning



PINELLAS PATHWAYS TO GRADUATION

Why?

- Helps prepare students to earn Florida's Standard High School Diploma
- Allows students to choose a course of study that best fits their college and/or career plans
- Recommends a pathway of courses to take but students are not locked in
 - Can make changes/updates to customize to your needs



INFORMATION ABOUT PATHWAYS

Advanced Scholar Pathway

- Includes a rigorous level of required and elective courses that best prepare students seeking admittance to competitive four-year universities

College Pathway

- Includes a rigorous level of required and elective courses that best prepare students for entry into a college or four year university

Technical/College Pathway

- Offers the opportunity for students to challenge themselves in specific academic and elective areas of interest, earn nationally recognized industry certifications, and pursue entry into a post-secondary technical school or state college

CAREER TECHNICAL EDUCATION: HS PROGRAMS

PNELLAS COUNTY SCHOOLS CAREER TECHNICAL EDUCATION HIGH SCHOOL PROGRAMS 2014 - 2015

Program	CCSF	CCSC	CCBC	CCCD	CCFC	CCIC	CCJC	CCPC	CCSC	CCVC	CCWC	CCXC	CCYC	CCZC
Agriculture Sciences														
Apiculture														
Electron Microscopy														
Horticulture Science and Business Technology														
Business Technology														
A/BIT Developer and Programming														
Accounting Applications														
Administrative Office Specialist														
Applied Computer Systems														
Applied Information Technology														
Business Supervision & Management														
Computer Systems & Information Technology														
Digital Design														
Digital Media Technology														
General Office Administration Programming														
Global Logistics and Supply Chain Technology														
International Business														
Java Development and Programming														
Legal Administrative Specialist														
Medical Administrative Specialist														
Network Support Services (CCSC)														
Network Systems Administration														
New Media Technology														
Professional Buyer														
Web Development														
Event Management														
Event Management														
Health Science														
Allied Health Assistant														
Biomedical Science (Bio Tech) and Biotechnology														
Health and Wellness														
Nursing Assistant														
Food & Consumer Science														
Culinary Arts														
Early Childhood Education														
Fashion Design Services														
Interior Design Services														
Teacher Assistant														
Industrial Education														
Automotive Collision Repair & Refinishing														
Automotive Maintenance & Light Repair														
Building Construction Technology														
Building Trades & Construction Design Technology														
Carpentry														
Commercial Art Technology														
Cosmetology														
Digital Camera Production														
Digital Video Production														
Drafting														

Industry Certification = College Tuition Savings

Industry Certification	College Credit Value ①	College Tuition Saved	Associate in Science Degree Program	Career Pathway	Median Wage ②
Adobe Certified Associate (ACA) Web Communication using Adobe Dreamweaver	3	\$312	Internet Services Technology	Web Administrator	\$82,340
Agriculture Technician Certification	2	\$208	Agriculture Production Technology	Farmers, Ranchers, Agricultural Managers	\$70,110
ASE Automobile/Light Truck Technician: Brakes (A5)	3	\$312	Automotive Service Management Technology	Automotive Service Technicians	\$36,710
Autodesk Certified User - AutoCAD	3	\$312	Drafting and Design Technology	Architectural and Civil Drafters	\$48,800
Autodesk Certified User - Autodesk Inventor	3	\$312	Engineering Technology	Mechanical Engineering Technician	\$52,390
Biotechnician Assistant	3	\$312	Biotechnology/Biotechnology Laboratory Technology	Biological Technicians	\$40,710

HS DISTRICT APPLICATION PROGRAMS GUIDE

Choices Abound District Application Programs Guide

Information Fairs
Nov. 9 & 11

Application Period
Jan. 10-19

Acceptance Period
Feb. 14-21

2018 - 2019



My Choice.
My Pinellas County Schools.
www.pcsb.org



SIMPLIFY THE COLLEGE PLANNING PROCESS

1. Understand the admissions factors
2. Learn about the SAT® and SAT Subject Tests™
3. Explore college options
4. Develop a financial plan

UNDERSTAND ADMISSIONS FACTORS

× Primary Factors

- + Quality/Rigor of Academic Courses
- + Academic Performance
- + Test Scores (SAT, ACT, AP, AICE, IB, etc.)

× Additional Factors

- + Extracurricular Activities
- + Essay(s)
- + Letters of Recommendation
- + Demonstrated Interest
- + Geography



Understand
Admission
Factors

GRADES AND COURSEWORK

This is one of the most important factors for admission to college!

- + Colleges will consider
 - × Course selection – rigorous
 - × Grades – balance volume of rigor for success
 - × GPA Trends

OTHER CONSIDERATIONS

- ✘ Positive recommendations from educators/mentors
- ✘ Personal statement/essay that demonstrates writing ability and self expression
- ✘ Demonstrated interest in the college
- ✘ Extracurricular activities – commitment to a sport, performing/visual art, club, volunteering, etc.
- ✘ Community involvement, part-time work, internship
- ✘ Interview (if applicable)



PCS Class of 2016: Average SAT Performance based on PSAT participation	Critical Reading Mean	Math Mean	Writing Mean	Total Mean
SAT without PSAT	478	465	442	1385
SAT & PSAT Gr. 11 only	515	514	499	1528
SAT & PSAT in Gr. 10 or Gr. 9 only	522	517	499	1538
SAT & PSAT in Gr. 11 AND Gr. 10 or Gr. 9	564	562	544	1670

EXPLORE COLLEGE OPTIONS

- ✘ What colleges are right for your child? Consider
 - + Size of school
 - + Diversity of student body
 - + Location
 - + Academic programs
 - + Campus life – athletics, activities, housing
 - + Graduation and retention rates
 - + Financial aid and scholarship opportunities
 - + WHERE WILL YOUR CHILD BE MOST HAPPY AND SUCCESSFUL IN HIS/HER COLLEGE LIFE?
 - + Visit <http://beyondeducation.org/> to explore your options

DEVELOP A FINANCIAL PLAN

- ✘ College Costs
 - + Tuition and fees
 - + Room and board
 - + Books and supplies
 - + Personal expenses (laundry, telephone, etc.)
 - + Travel (commuting or visiting home)
- ✘ Calculate your savings to see if you are on track (Florida pre-paid or other savings)
- ✘ Search for Scholarships!!!
- ✘ Visit Raise.Me.org

FLORIDA BRIGHT FUTURES PROGRAM

- Awarded to every student in the state of Florida who meets the eligibility requirements
- Requirements include Grade Point Average, Community Service hours, and Test Scores on the ACT or SAT
- Three levels of awards
 - Academic,
 - Medallion
 - Gold Seal Vocational
- Review Bright Futures eligibility at the Florida Shines website:
<https://www.floridashines.org/go-to-college/pay-for-college#>



SCHOLARSHIP INFORMATION

- ✘ EVERY family should complete a FAFSA in October of the child's graduation year in order to maximize financial aid
- ✘ Scholarship information can be found on the PCSB website (www.pcsb.org/financialaid)
- ✘ On the Financial Aid page, you will find links to
 - + Scholarship Opportunities
 - + Financial Aid Seminars
 - + Bright Futures
 - + Pinellas Education Foundation Scholarships
 - + Scholarship Search Engines, such as FASTWEB

CAREER CRUISING

- ✘ Builds a bridge between administrators/counselors, students & parents
- ✘ Students can create and update High School Academic Plans to meet their career goals
- ✘ Students & parents can track their progress toward graduation
- ✘ Links to information on finding the right college/major for your student, career exploration, scholarships and much more!

SAT SUITE OF ASSESSMENTS

- ✘ PSAT 8/9: Foundation for understanding students' progress prior as they enter high school; taken by all 8th graders in PCS
- ✘ PSAT/NMSQT: Check-in for student progress to pinpoint areas for development; taken by all 9th & 10th graders in PCS
 - + Optional and recommended for 11th graders (National Merit & other scholarships)
- ✘ SAT – College Entrance Exam
- ✘ Prepare using [SATpractice.org](https://satpractice.org) at Khan Academy

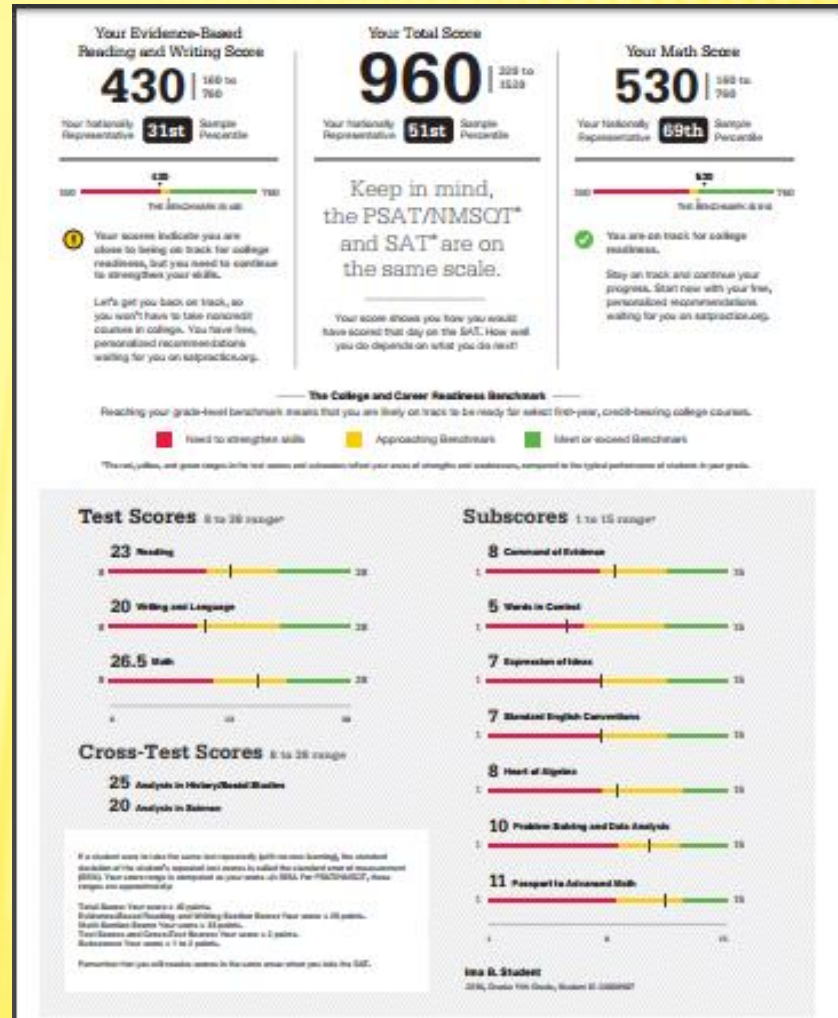
REMINDERS ABOUT THE SAT

- ✘ Three areas tested focus on skills that matter most for college readiness and success based on current research
 - + Total Length – 3 hours (plus 50 minutes for essay)
 - + Reading – 65 minutes, 52 questions
 - + Writing and Language – 35 minutes, 44 questions
 - + Mathematics – 80 minutes (55 w/ calculator, 25 w/o), 58 questions
 - + *Optional Essay*

REMINDERS ABOUT THE SAT

Scores for the March 10, 2018 SAT will be available beginning on April 12, 2018.

See sample score report to the right.



COLLEGE PLANNING RECAP

- × Remember college opportunities exist for ALL!
 - + Simplify the planning process
 - × Understand Admissions factors
 - × Explore college options
 - × Develop a financial plan
 - × Learn more about the SAT and SAT Subject Tests
 - * Students who take SAT with a fee waiver receive four College Application fee waivers directly from the College Board
 - * Students who take PSAT/NMSQT can opt in to the college search which sends student info to colleges so that colleges can reach out to the student

TODAY'S SAT RESULTS

- ✘ The College Board will mail your students scores to your homes sometime in late April 2018.
- ✘ Once your students scores have been received, we will provide another information session to explain the scores, provide you with next steps, and explain how to take advantage of online resources.
- ✘ **Important** info note about SAT scores for middle school students (from College Board) on next 2 slides!

IMPORTANT INFORMATION FOR 7TH GRADE SAT SCORES

- ✘ The scores your student will be receiving will not be permanent unless requested by the student in writing!
- ✘ If a student tests in the 8th grade or below, the **scores are purged** at the end of the testing year. Students can ask to **preserve their scores** as part of their permanent record if they choose. To do this, you must submit a request in writing (see next slide)

REQUEST IN WRITING TO KEEP SCORES FOR 8TH GRADERS AND BELOW:

- ✘ Before the end of June of the year in which they tested
- ✘ Including full name, registration number, and test date
- ✘ Addressed to:
The College Board SAT Program
Attention: Talent Search Scores
P.O. Box 025505
Miami, FL 33102

2018 PINELLAS COUNTY SCHOOLS STEM HONORS SUMMER CAMPS

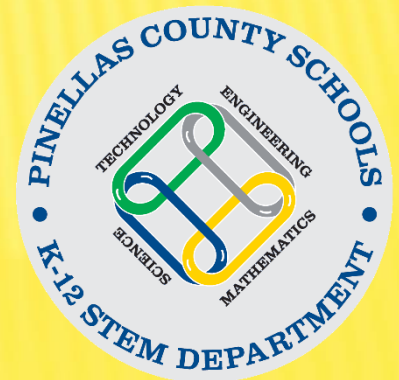
When: 8 a.m. to 3:30pm, June 4-7 & June 11-14, 2018
(8 days/Mon.-Thurs.)

Where: Lakewood High or East Lake Middle

What: Students will engage in science, technology, engineering and mathematic activities such as robotics, multi-media, computer programming and career exploration.

Application Fee: \$90.00 prior to 4/10/18
\$100.00 after 4/10/18

Application Deadline: Wednesday, May 10, 2018

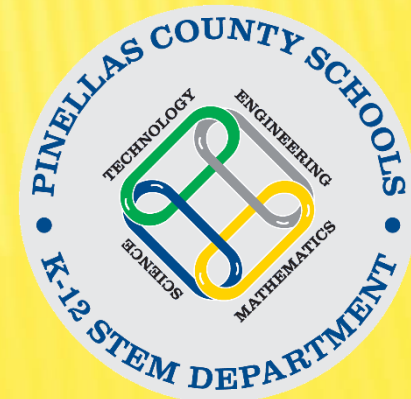


2018 PINELLAS COUNTY SCHOOLS STEM HONORS SUMMER CAMPS

How to enroll: There are 80 seats at each site. Students who wish to enroll may fill out the attached application and send it along with a check made out to Pinellas County Schools for the \$90.00 (if mailed in before April 10th) camp fee to:

Office of Teaching and Learning
Attn: Kimberly Christy
Pinellas County Schools
301 4th Street SW
Largo, FL 33770

Download Application: www.pcsb.org/STEM





WHAT QUESTIONS OR CONCERNS DO YOU HAVE?

